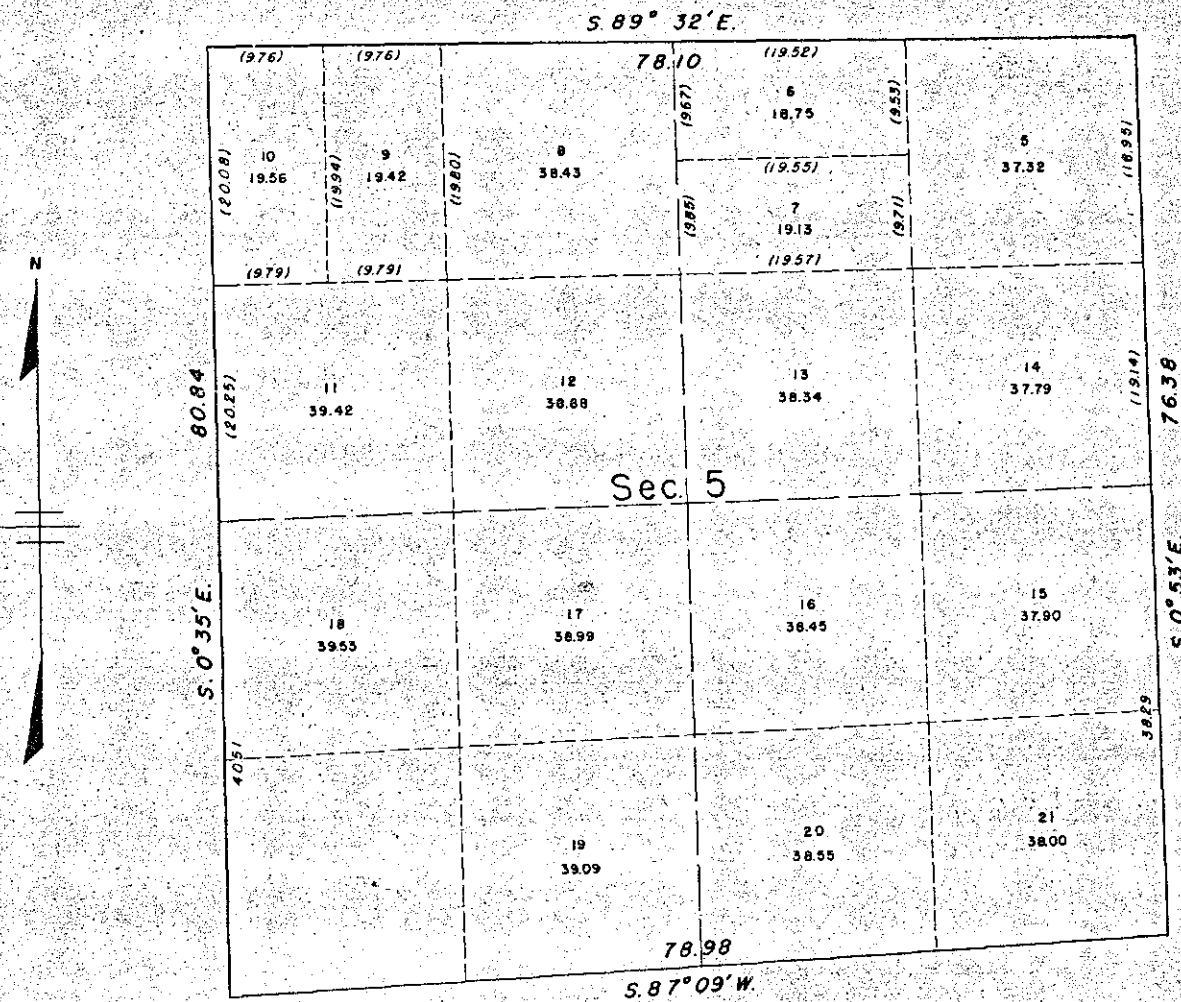
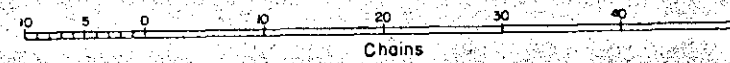


TOWNSHIP 12 SOUTH, RANGE 45 EAST, OF THE WILLAMETTE MERIDIAN, OREGON. SUPPLEMENTAL PLAT



This plat of sec. 5, T. 12 S., R. 45 E., W. M., Oregon, showing a subdivision of original lots 2 and 4 and amended lottings in terms of the resurvey record, is based on plats approved October 25, 1882 and July 10, 1939.

UNITED STATES DEPARTMENT OF THE INTERIOR
BUREAU OF LAND MANAGEMENT
Washington, D. C. January 18, 1955

This plat showing amended lottings, having been correctly prepared in accordance with the regulations, is hereby accepted.

For the Director

Earl G. Harrington
Cadastral Engineering Staff Officer